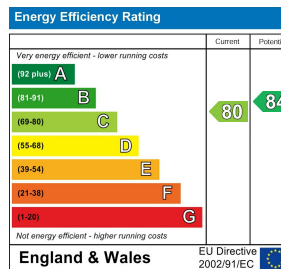
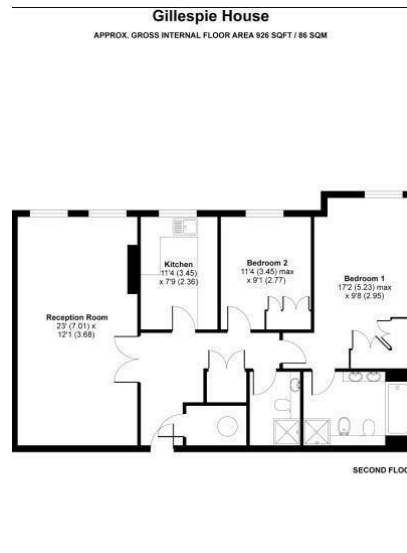




Gillespie House | Virginia Park | Virginia Water | GU25 4SU

£2,350 PCM

Waterfords W
Residential Sales & Lettings



Description

A beautifully presented two-bedroom first-floor apartment, ideally situated within the highly sought-after Virginia Park development. This elegant home benefits from two secure underground parking spaces and exclusive access to residents' leisure facilities. Perfectly positioned, it offers superb convenience with Virginia Water's vibrant shopping parade and mainline train station just a short distance away.

Key features

- Two Double Bedroom Apartment
- Beautiful Views
- Gated Development
- Minimum Term 12 Month Let
- EPC F
- Virginia Park Development
- Gym, Swimming pool and Tennis Courts Available
- 24 Hour Security
- Available End Of May 2026
- EPC C



35 Plough Road
Hampshire
GU46 7UW
01276 903006

surreylettings@waterfords.co.uk
<https://www.waterfords.co.uk/>